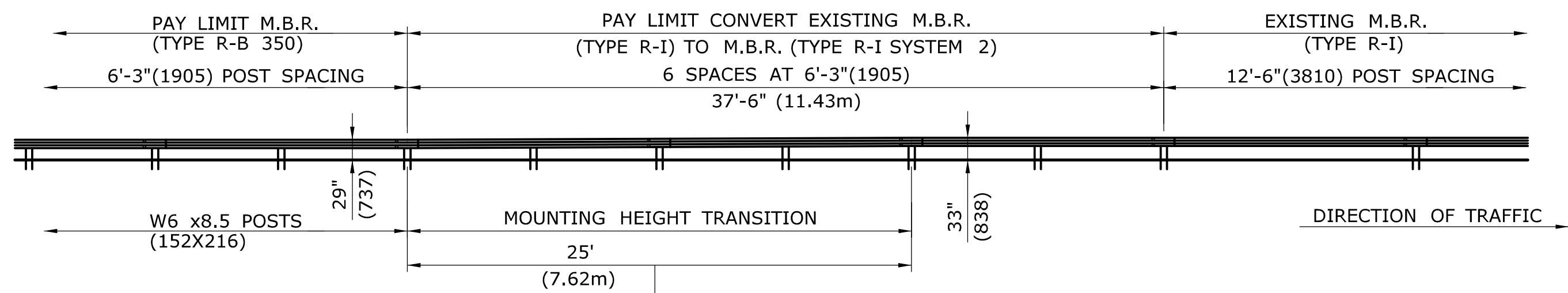
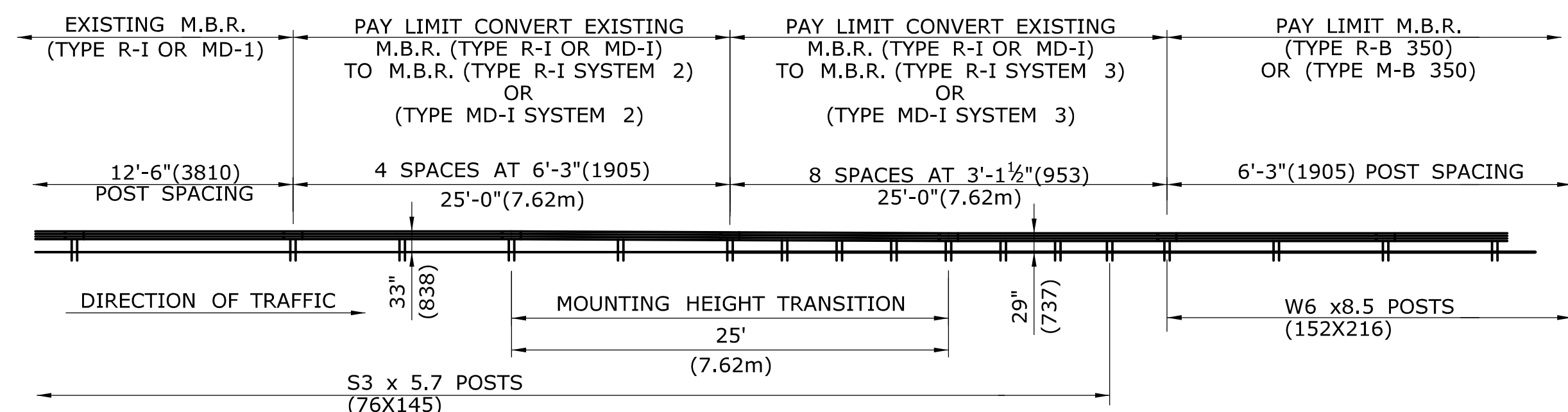


**GENERAL NOTES:**

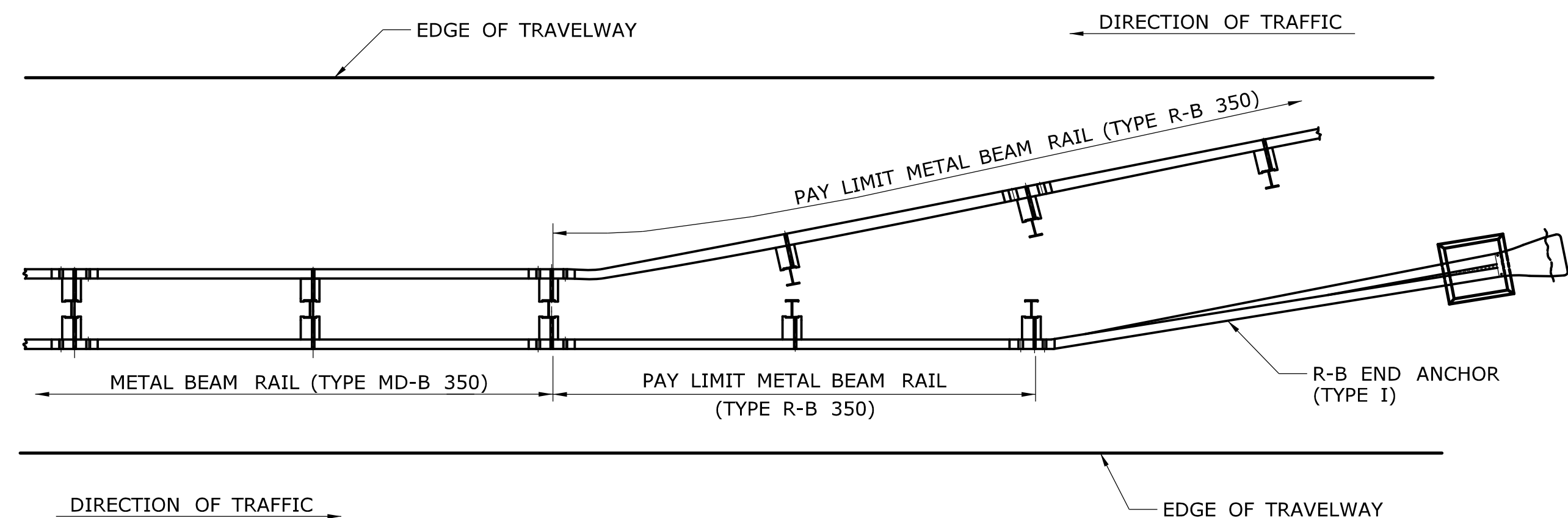
1. POST PLACEMENT WITHIN THE LIMITS OF THE TRANSITION SHOULD BE ADJUSTED TO ACCOMMODATE THE INTRODUCTION OF THE BLOCKOUT WHILE MAINTAINING A SMOOTH RAIL LINE.



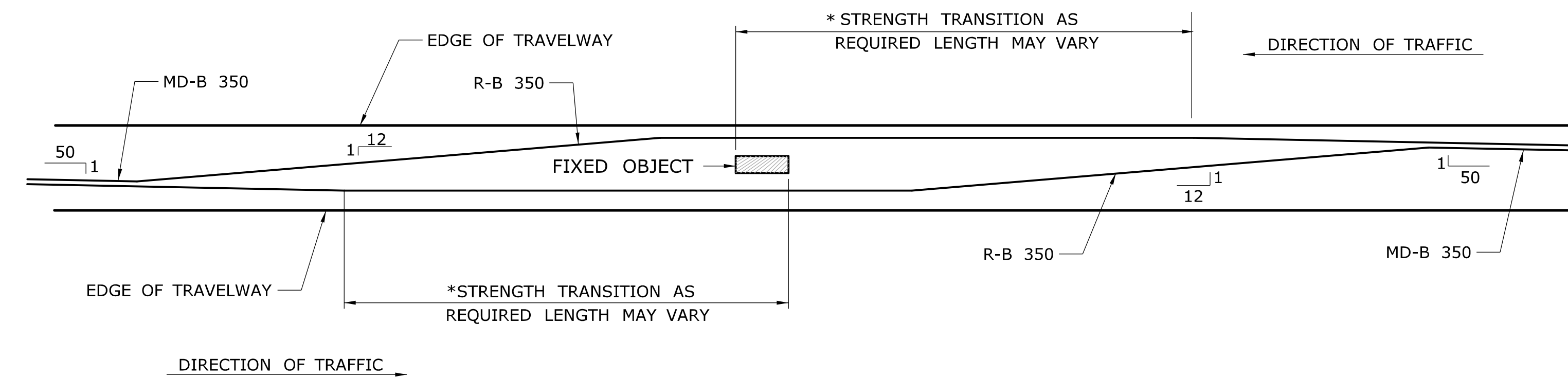
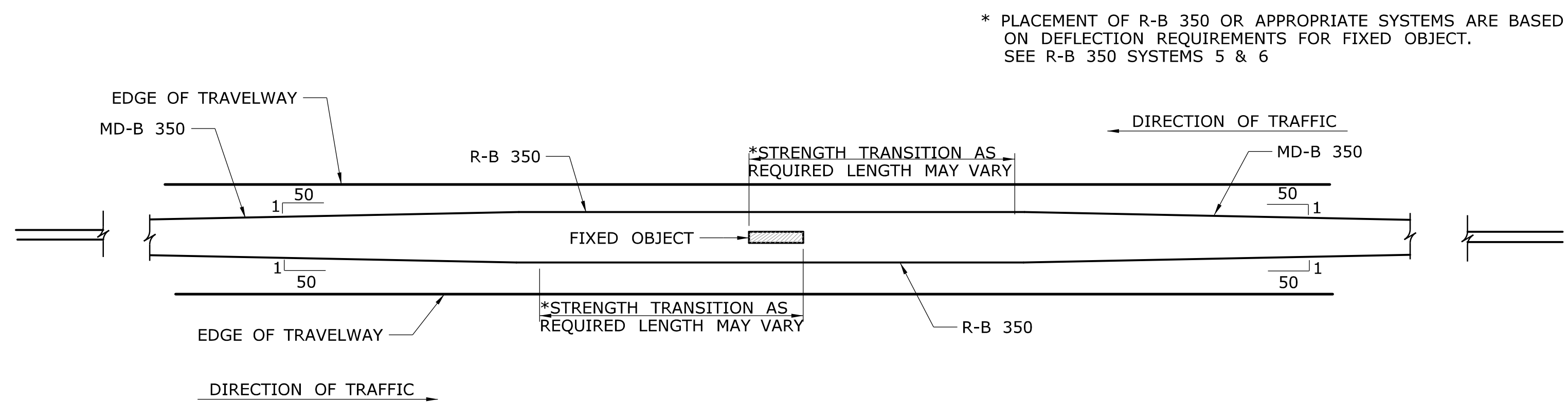
**TRANSITION OF (TYPE R-B 350) TO (TYPE R-I)  
IN THE DIRECTION OF TRAFFIC**



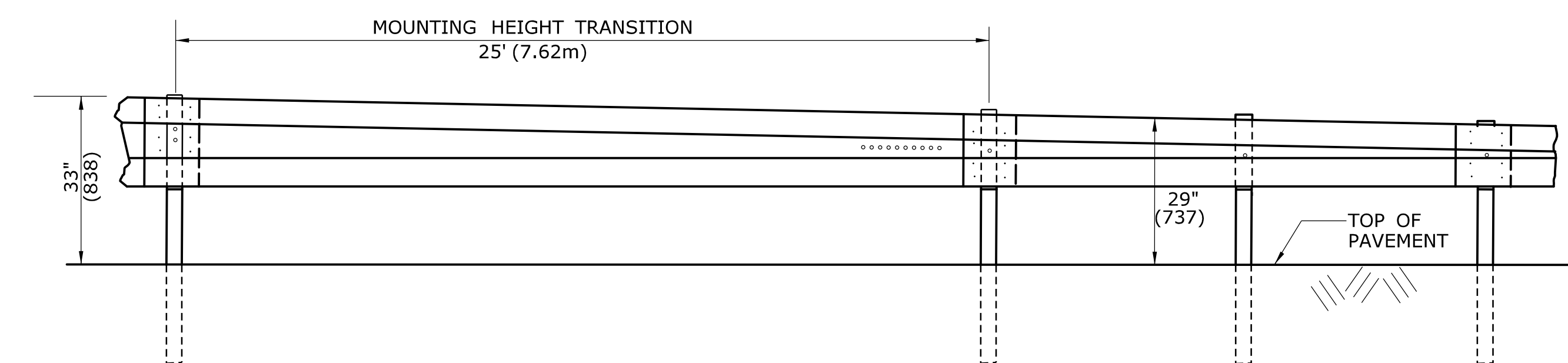
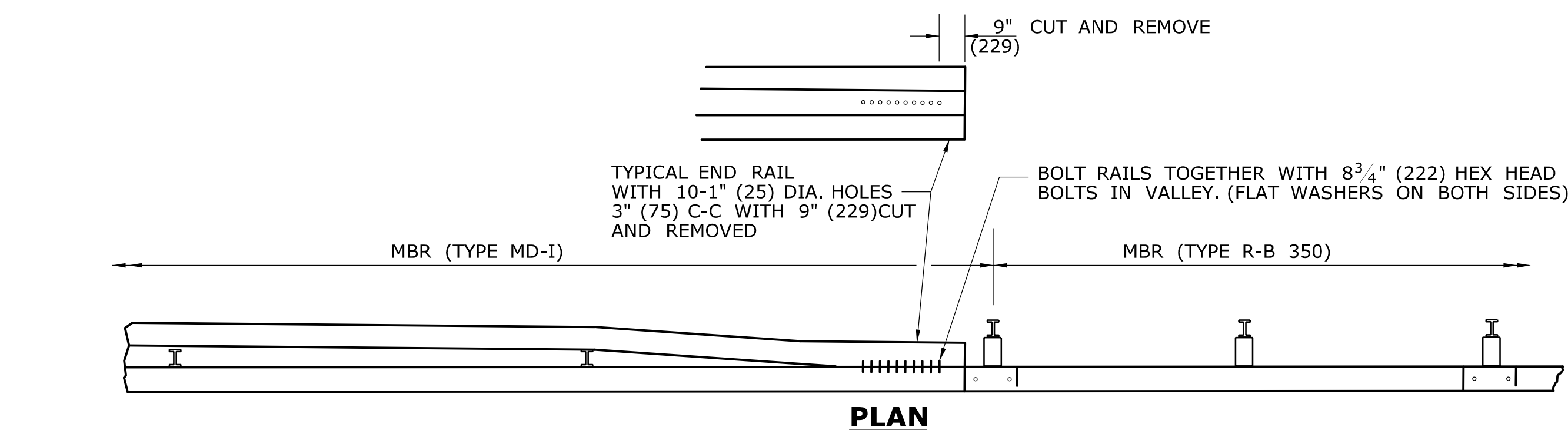
**TRANSITION OF (TYPE R-I) TO (TYPE R-B 350)  
IN THE DIRECTION OF TRAFFIC  
OR  
(TYPE MD-I) TO (TYPE MD-B 350)**



**PLAN  
TRANSITION OF METAL BEAM RAIL  
(TYPE MD-B 350) TO (TYPE R-B 350)**



**TYPICAL FIXED OBJECT MEDIAN GUIDERAIL TRANSITIONS**



**ELEVATION  
TRANSITION OF METAL BEAM RAIL  
(TYPE MD-I) TO (TYPE R-B 350)**

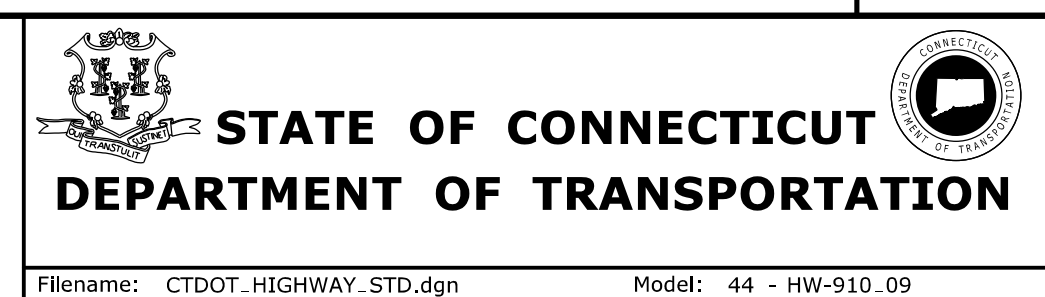
ALL METRIC DEMENSIONS ARE IN MILLIMETERS (mm) UNLESS OTHERWISE NOTED.

REV.	DATE	REVISION DESCRIPTION
-	-	-
-	-	-
-	-	-
-	-	-
-	-	-
-	-	-
-	-	-
-	-	-
-	-	-

THE INFORMATION, INCLUDING ESTIMATED QUANTITIES OF WORK SHOWN ON THESE SHEETS IS BASED ON LIMITED INVESTIGATIONS BY THE STATE AND IS IN NO WAY WARRANTED TO INDICATE THE CONDITIONS OF ACTUAL QUANTITIES OF WORK WHICH WILL BE REQUIRED.

Plotted Date: 10/4/2010

NOT TO SCALE



SUBMITTED BY: \_\_\_\_\_ NAME/DATE/TIME: \_\_\_\_\_

APPROVED BY: \_\_\_\_\_ NAME/DATE/TIME: \_\_\_\_\_

**CTDOT  
STANDARD SHEET  
OFFICE OF ENGINEERING**

STANDARD SHEET TITLE:  
**MISCELLANEOUS  
GUIDERAIL TRANSITIONS**

STANDARD SHEET NO.:  
**HW-910\_09**