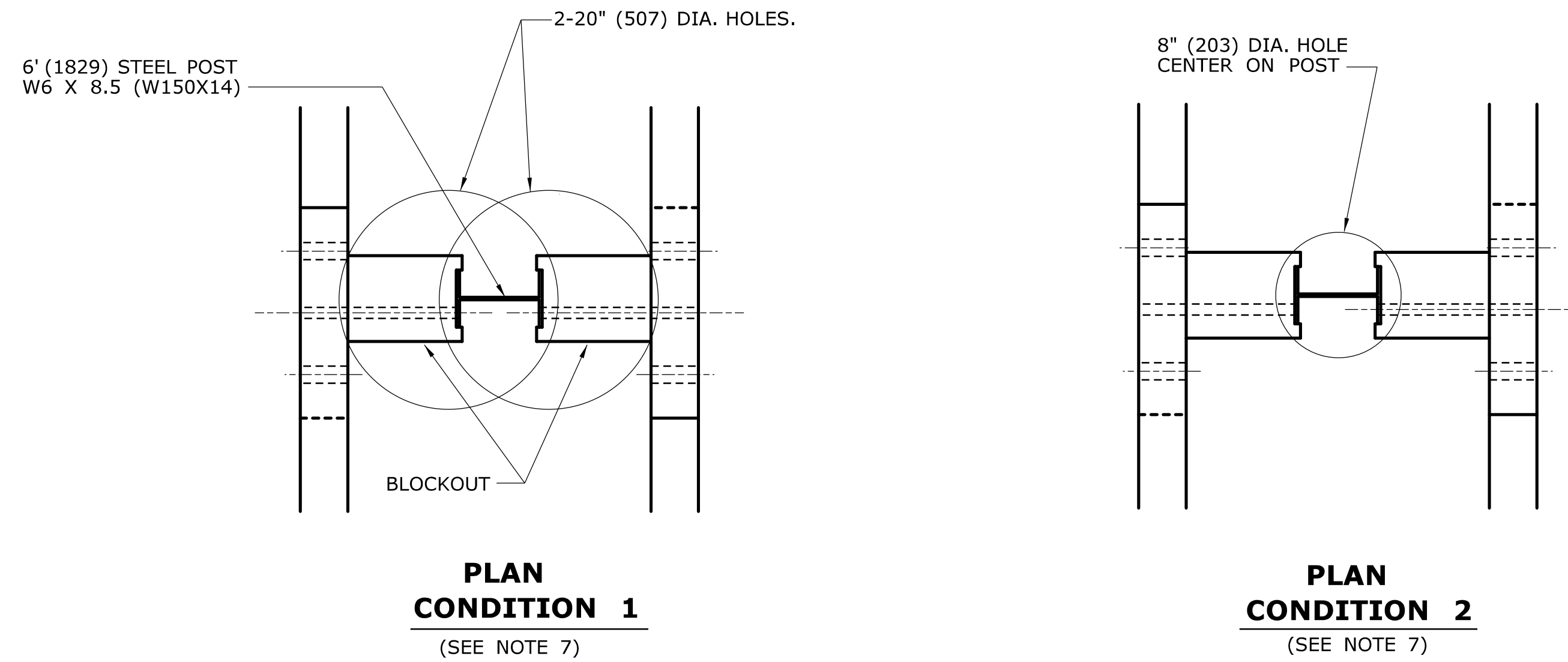
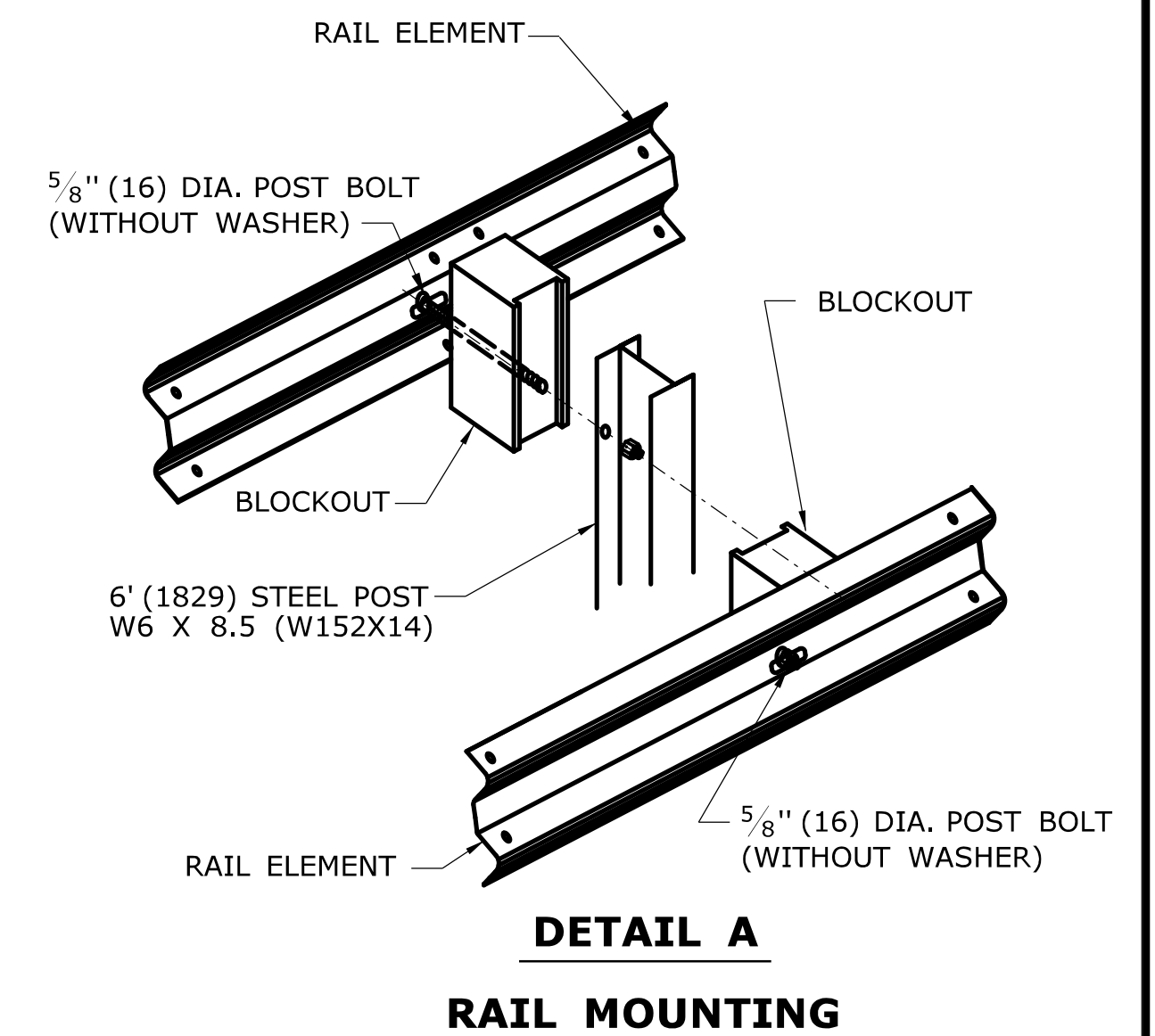
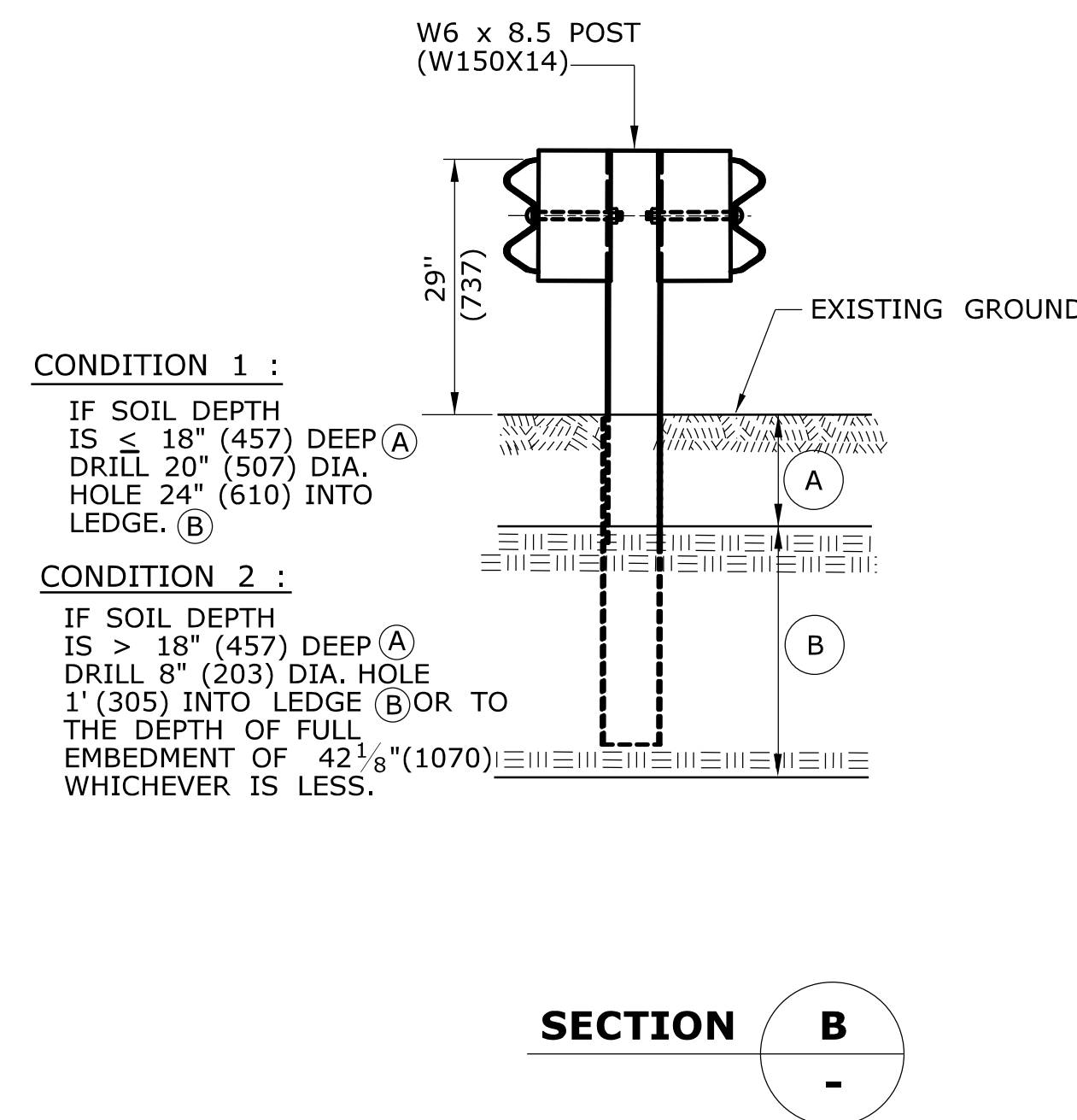
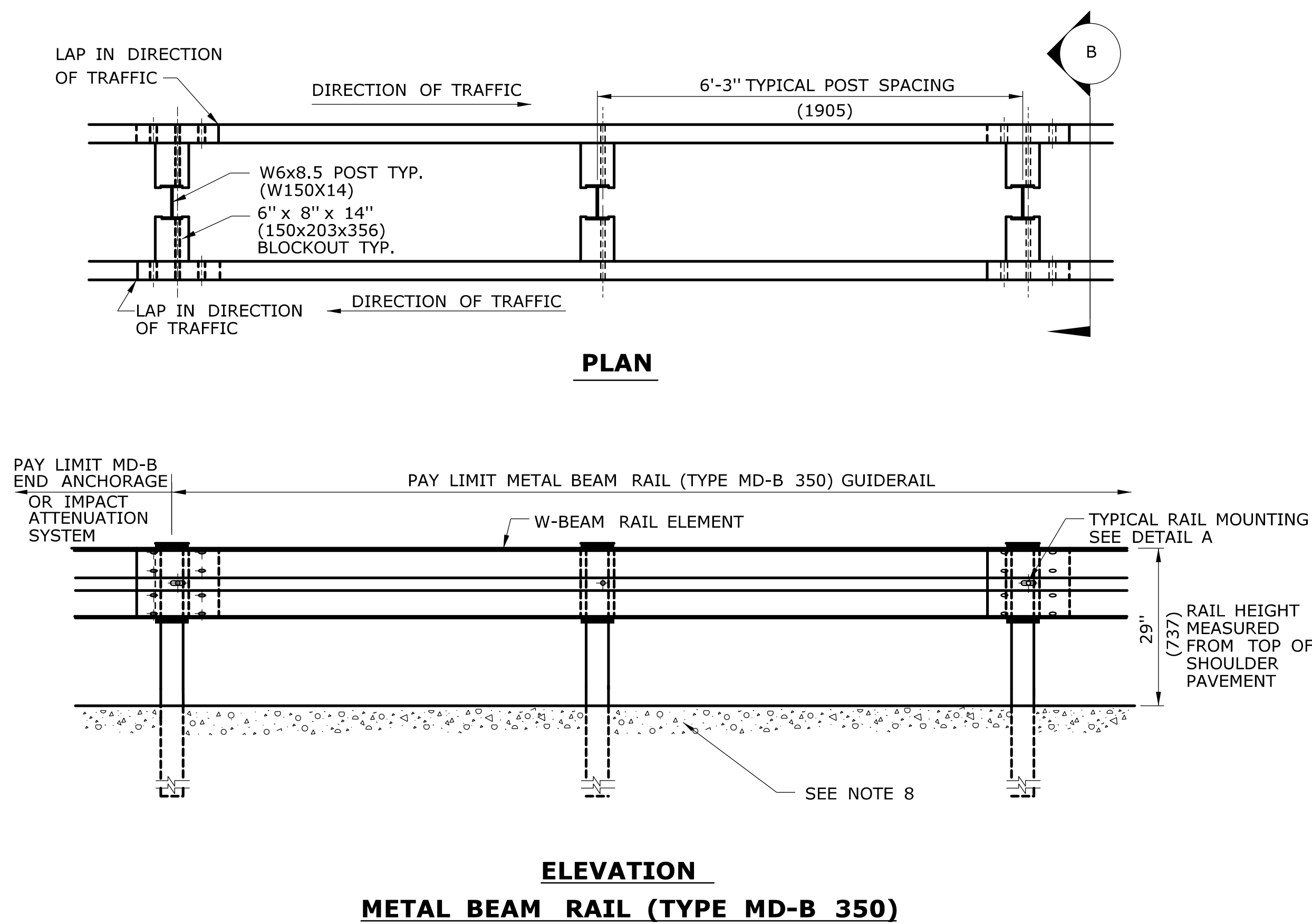


GENERAL NOTES:

1. SEE SHEET HW-910-01 FOR HARDWARE AND DELINEATOR DETAILS.
2. MAXIMUM DESIGN DEFLECTION FOR MD-B 350 GUIDERAIL AT THE STANDARD POST SPACING OF 6'-3"(1905) IS 2' (610). DEFLECTION REQUIREMENT IS MEASURED FROM THE BACK OF POST TO THE FACE OF OBJECT.
3. FOR CURVES WITH RADII OF 150'(45.7m) OR LESS, ALL RAIL ELEMENTS SHALL BE SHOP FABRICATED TO THE PROPER RADIUS AND GALVANIZED AFTER FABRICATION. RADIUS RAIL WHEN REQUIRED AND NOTED ON THE PLANS, IS INCLUDED IN THE PAY ITEM FOR GUIDERAIL.
4. THE BOTTOM OF WEATHERING STEEL POSTS, WHEN SPECIFIED, SHALL BE GALVANIZED IN ACCORDANCE WITH ASTM-A-123 TO PROVIDE A 2" (51) EXPOSED GALVANIZED COATING ABOVE THE GROUND.
5. W-BEAM GUIDERAIL MAY BE PLACED 1' (305) OR MORE FROM THE EDGE OF PAVEMENT ONLY ON SLOPES 10:1 OR FLATTER AND WITHOUT CURBING. IF THE RAIL IS INSTALLED WITHIN 2'(610) OF THE EDGE OF PAVEMENT, THE RAIL HEIGHT IS MEASURED FROM THE SHOULDER SLOPE EXTENDED TO THE RAIL. IF THE RAIL IS INSTALLED BEYOND 2' (610) FROM THE EDGE OF PAVEMENT, THE RAIL HEIGHT IS MEASURED FROM THE GROUND DIRECTLY BELOW THE RAIL.
6. MD-B 350 DOES NOT REQUIRE 10 GAUGE RAIL ELEMENTS.
7. 2-20" (507) DIA. EXCAVATED HOLES SHALL BE BACKFILLED WITH SUITABLE MATERIAL, OR GRANULAR FILL COMPACTED IN 6" (150) LIFTS BEFORE DRIVING POST OR POSTS MAY BE SET IN EXCAVATED HOLE AND BACKFILLED WITH CONTROLLED LOW STRENGTH MATERIAL (CLSM). 8" (203) DIA. HOLE SHALL BE BACKFILLED WITH SUITABLE MATERIAL.
8. AS DIRECTED BY THE ENGINEER AND WHERE PAVEMENT FOR RAILING IS NOT BEING INSTALLED PROCESSED AGGREGATE SHALL BE INSTALLED A MINIMUM OF 2' (610) WIDE UNDER GUIDERAIL CENTERED ON THE POST AND COMPACTED IN 6" (150) LIFTS.
9. MINIMUM RAIL HEIGHT FOR NEW CONSTRUCTION SHALL BE 29" (737) ± 1" (25).



DRILLING IN ROCK FOR GUIDERAIL POSTS



NOTE: REFER TO DESIGN PLANS FOR LOCATION OF GUIDERAIL IN THE MEDIAN WITH OR WITHOUT CURBING.

ALL METRIC DIMENSIONS ARE IN MILLIMETERS (mm) UNLESS OTHERWISE NOTED.

REV.	DATE	REVISION DESCRIPTION	Plotted Date: 9/30/2010	NOT TO SCALE	<p>STATE OF CONNECTICUT DEPARTMENT OF TRANSPORTATION</p>	SUBMITTED BY: _____ NAME/DATE/TIME: _____ APPROVED BY: _____ NAME/DATE/TIME: _____	CTDOT STANDARD SHEET OFFICE OF ENGINEERING	STANDARD SHEET TITLE: METAL BEAM RAIL (TYPE MD-B 350)	STANDARD SHEET NO.: HW-910_03
------	------	----------------------	-------------------------	--------------	--	---	--	---	---