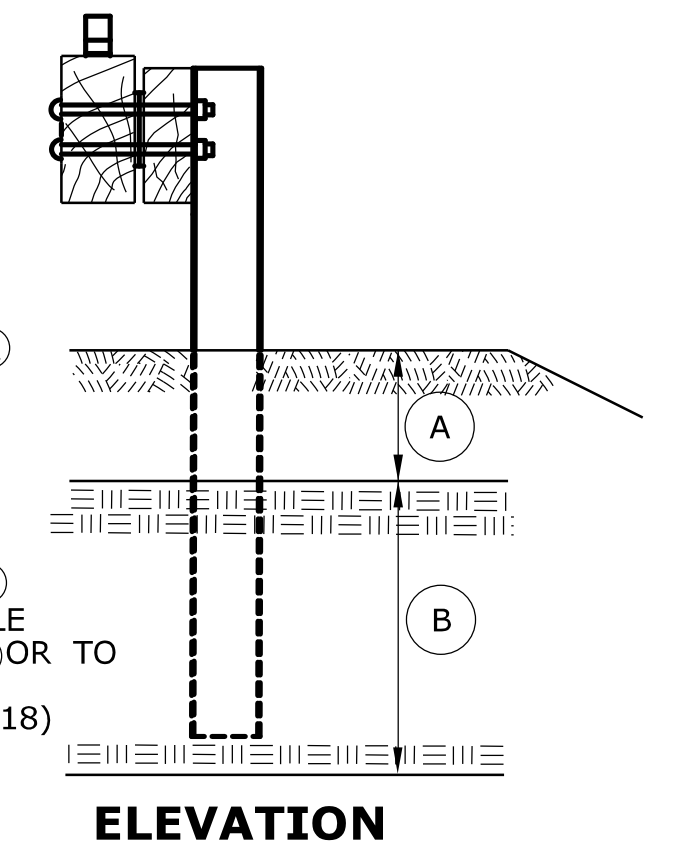
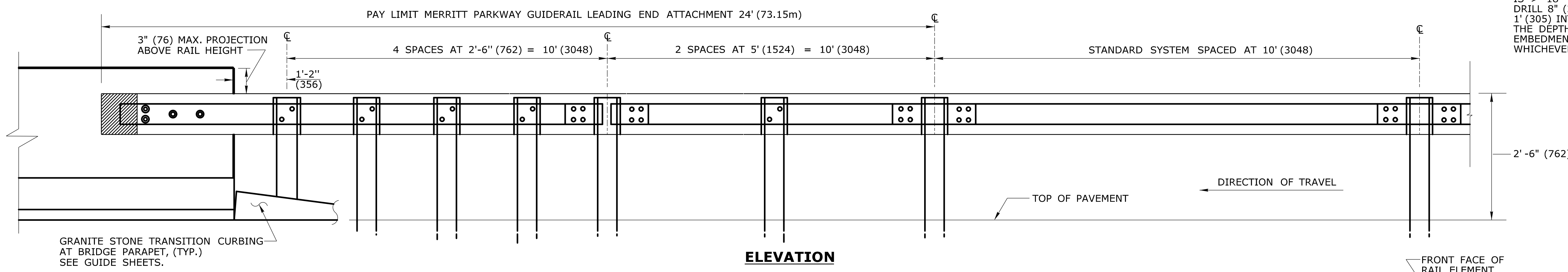
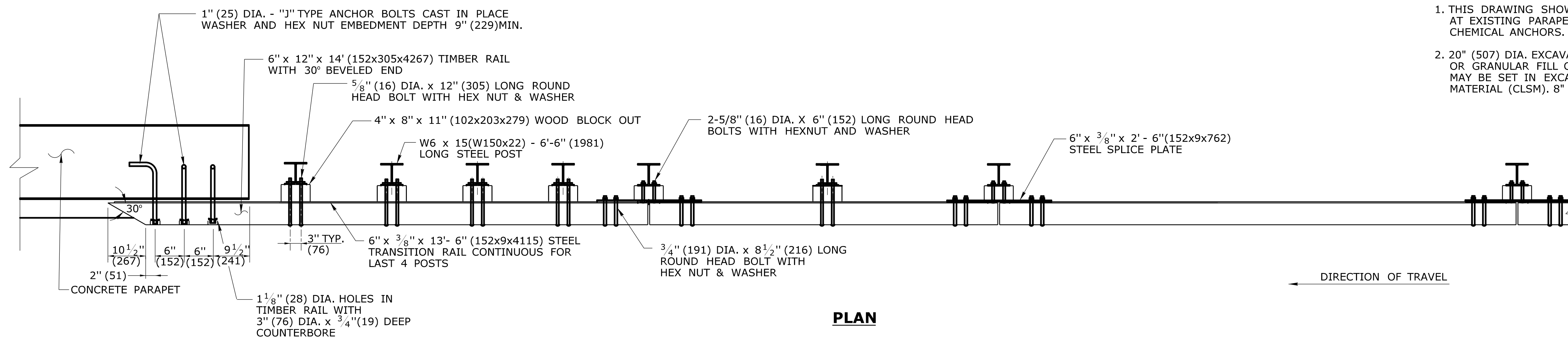
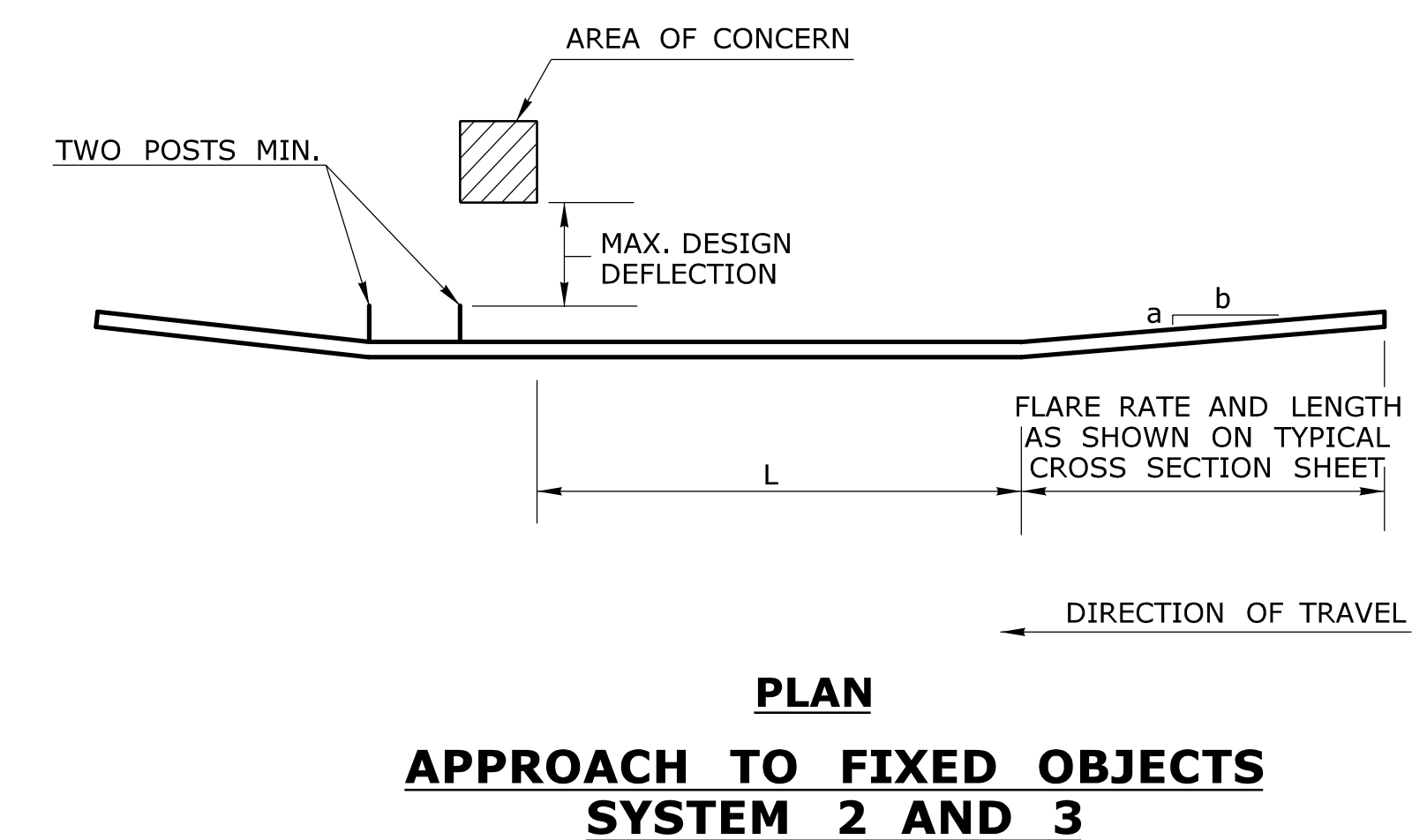
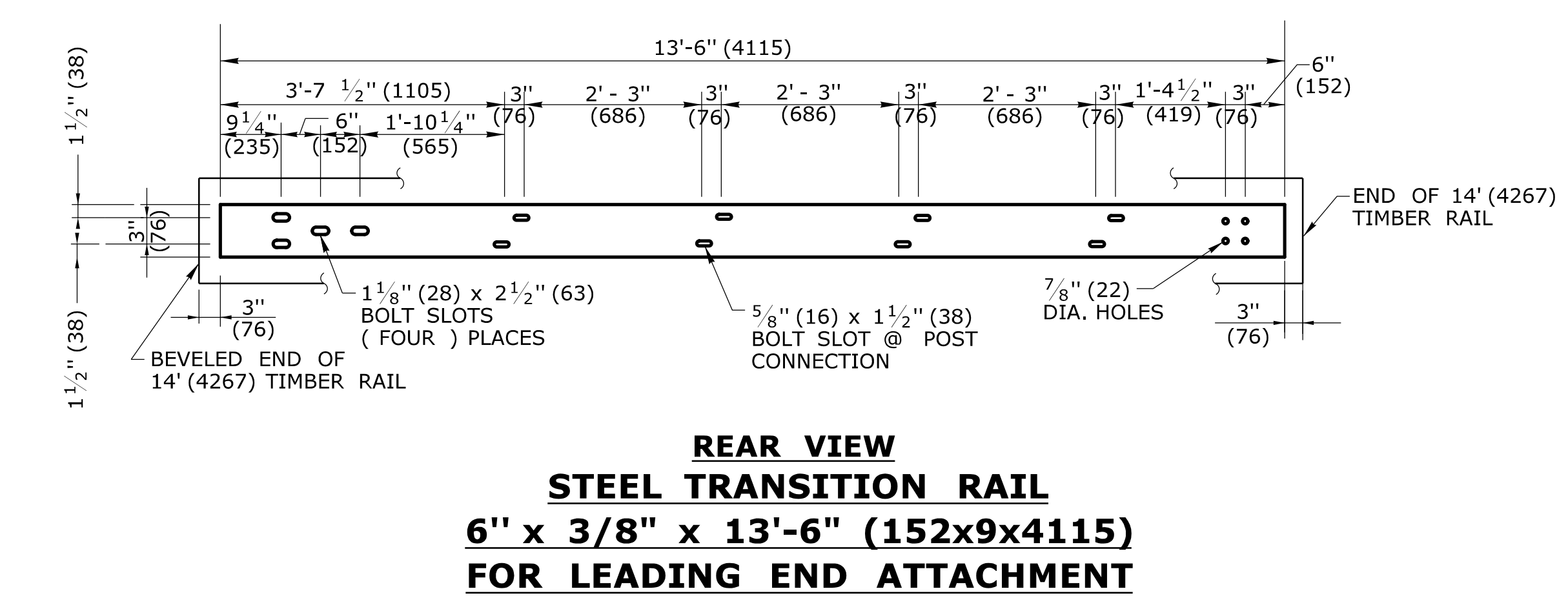
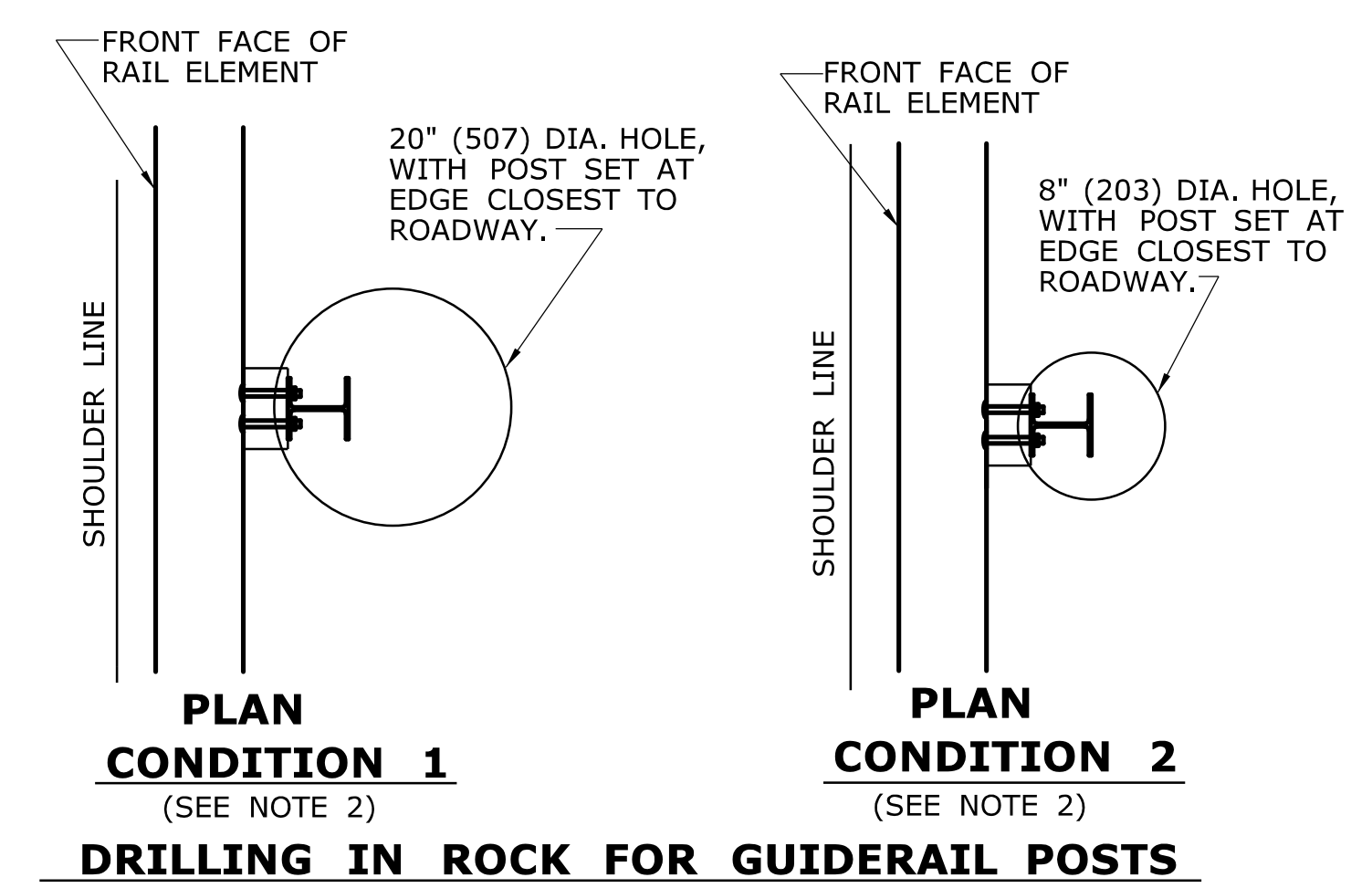


GENERAL NOTE:

- THIS DRAWING SHOWS LEADING END ATTACHMENT TO PROPOSED PARAPETS. AT EXISTING PARAPETS ATTACH GUIDERAIL USING D.O.T. APPROVED CHEMICAL ANCHORS.
- 20" (507) DIA. EXCAVATED HOLE SHALL BE BACKFILLED WITH SUITABLE MATERIAL, OR GRANULAR FILL COMPACTED IN 6" (150) LIFTS BEFORE DRIVING POST OR POSTS MAY BE SET IN EXCAVATED HOLE AND BACKFILLED WITH CONTROLLED LOW STRENGTH MATERIAL (CLSM). 8" (203) DIA. HOLE SHALL BE BACKFILLED WITH SUITABLE MATERIAL.



ATTACHMENT AT LEADING END (JERSEY SHAPE BARRIER SHOWN)



Maximum Design Deflection (ft) (mm)	Area Of Concern Plus 2 Posts (see sketch)	SYSTEM 3 W6x15 (W150x22) Posts Spaced at 2'-6" (762)	SYSTEM 2 W6x15 (W150x22) Posts Spaced at 5' (1524)	Standard System W6x15 (W150x22) Posts Spaced at 10' (3048)	L Min. Length Needed
1' (305)	System 3	10' (3048)	10' (3048)	50' (16.40m)	70' (21.34m)
2' - 6" (762)	System 2	-	10' (3048)	60' (19.68m)	70' (21.34m)
4' (1219)	Standard System	-	-	70' (21.34m)	70' (21.34m)

ALL METRIC DIMENSIONS ARE IN MILLIMETERS (mm) UNLESS OTHERWISE NOTED.