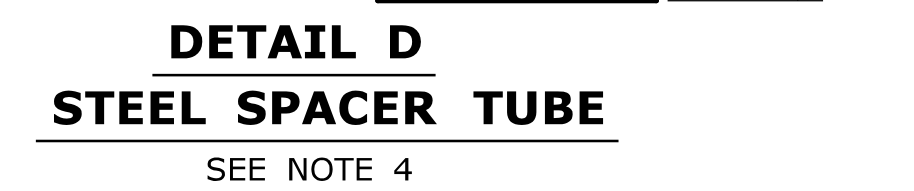
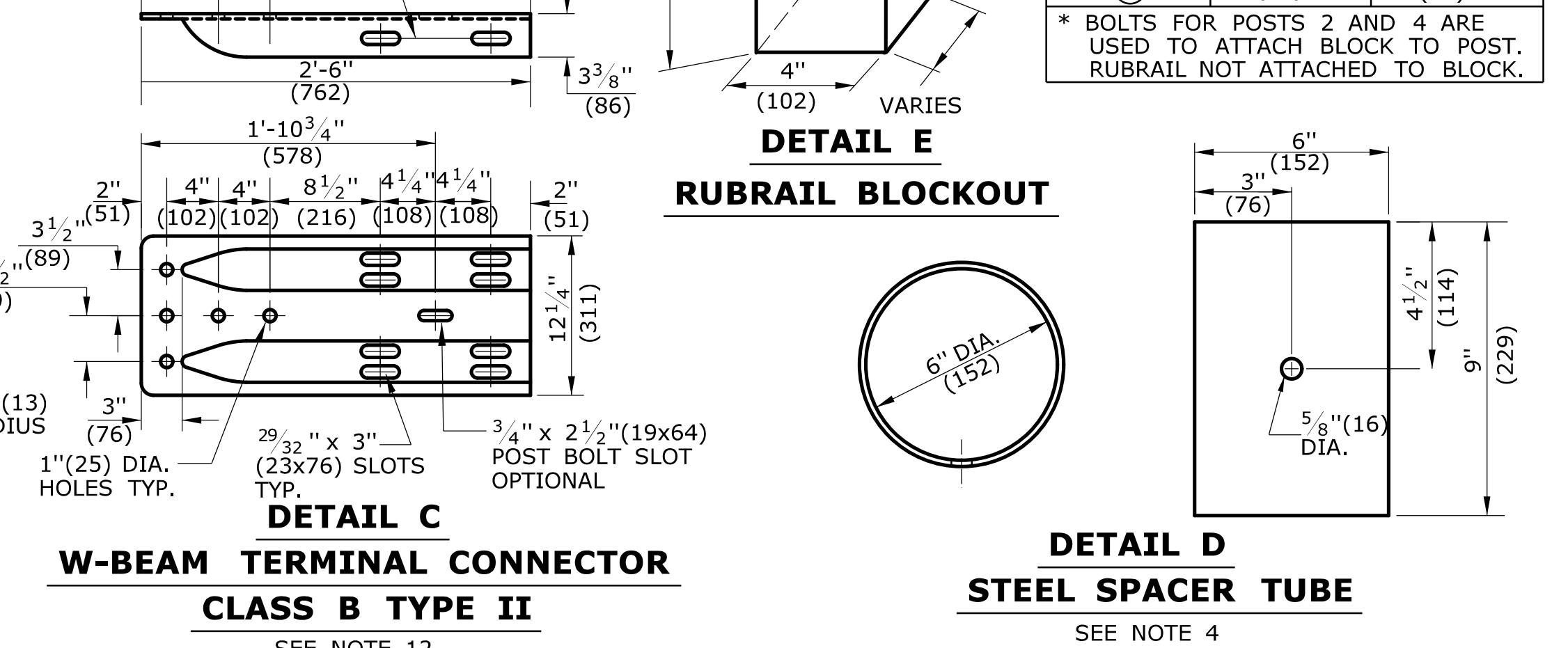
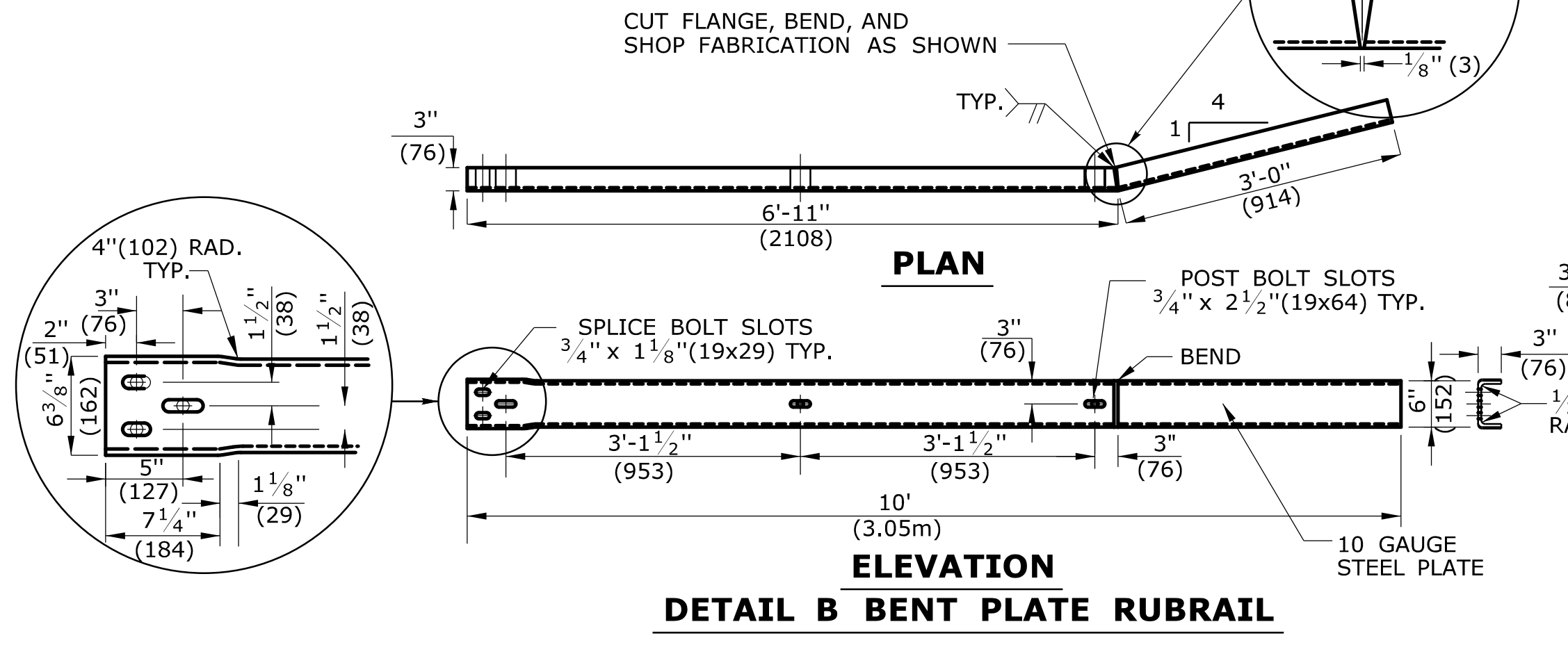
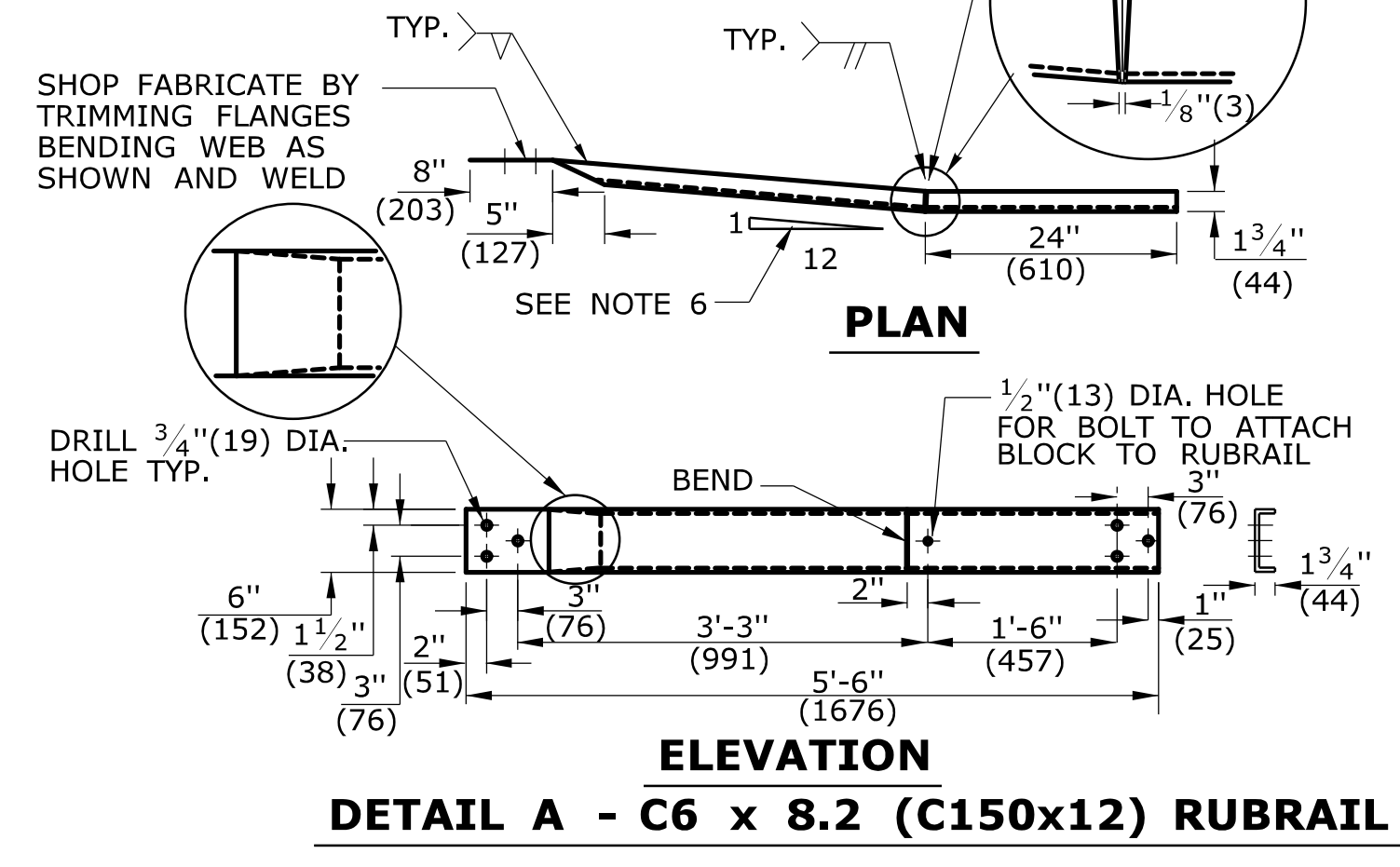
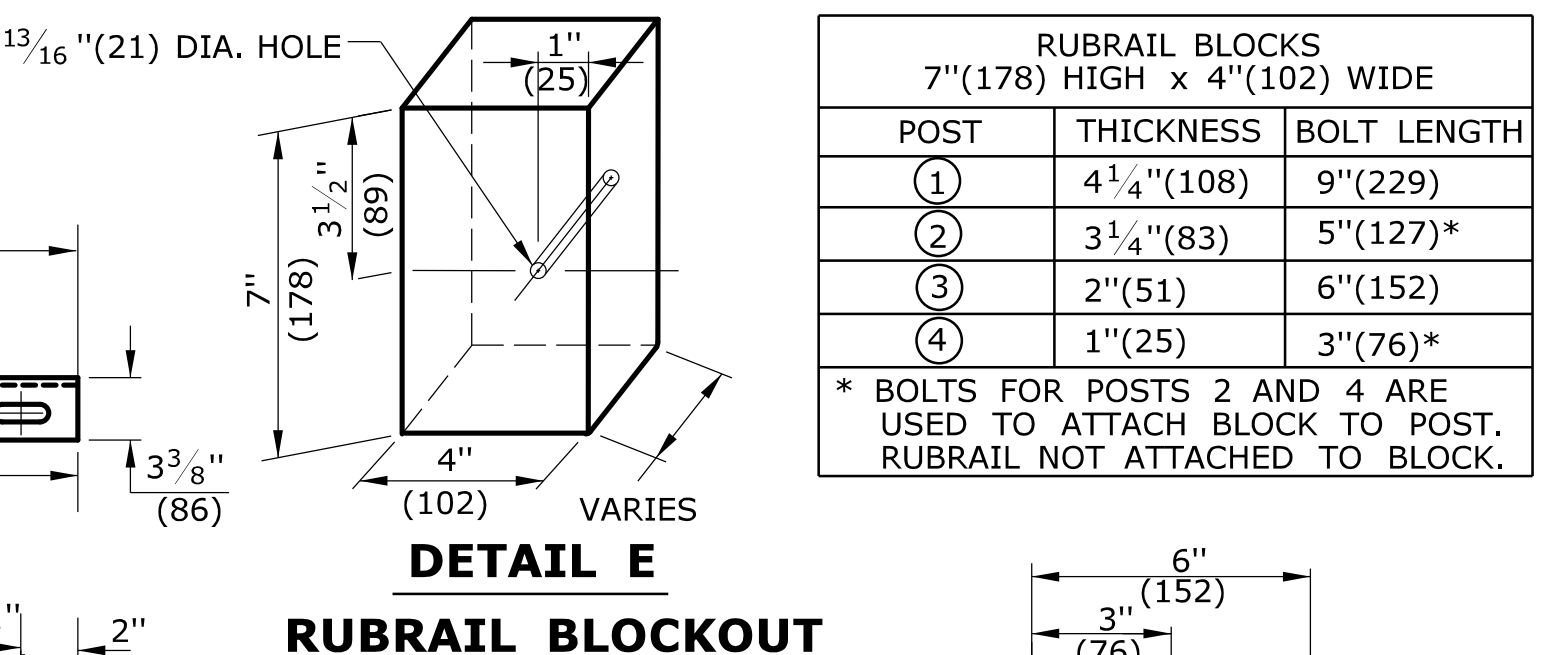
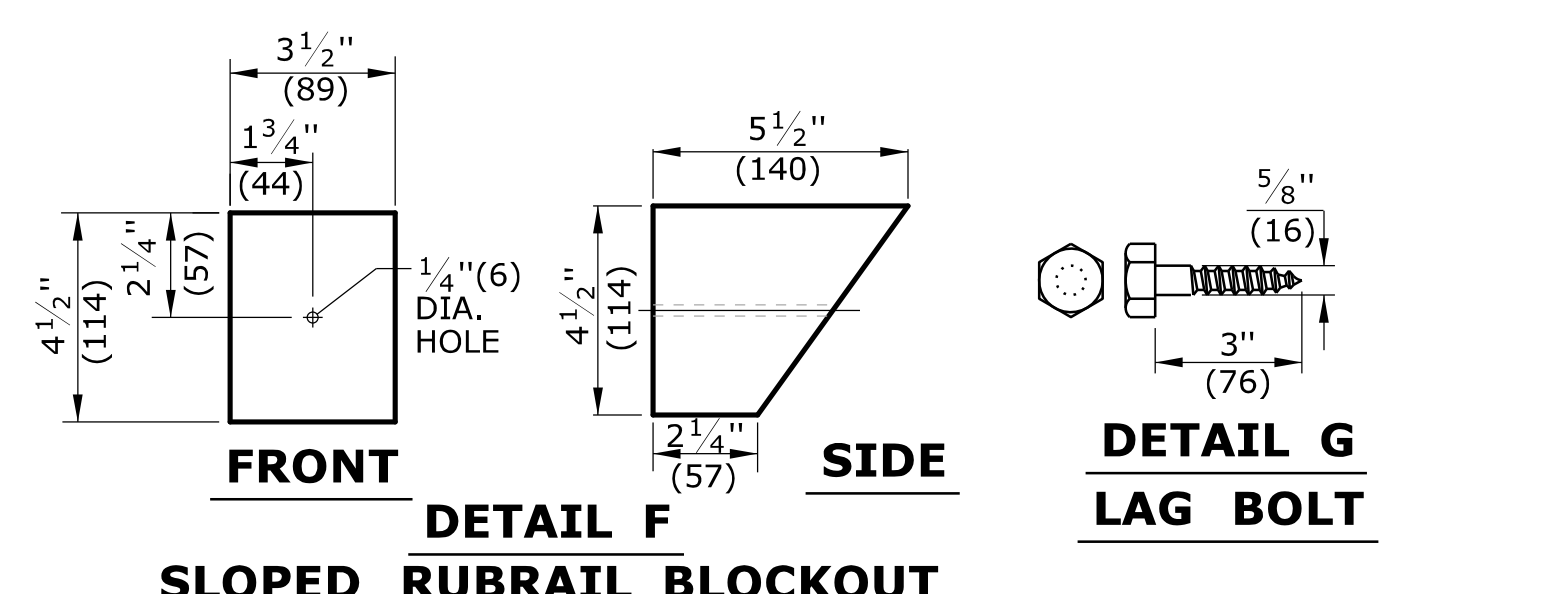
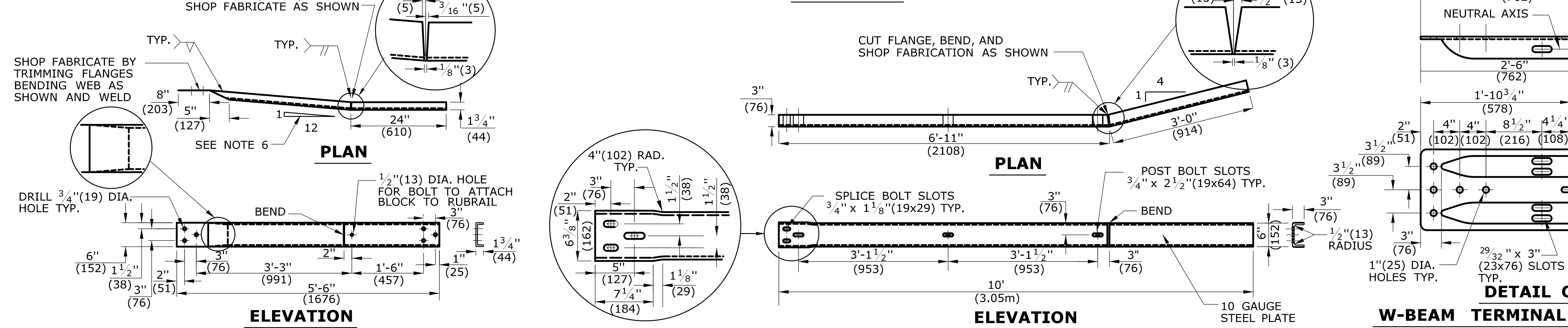
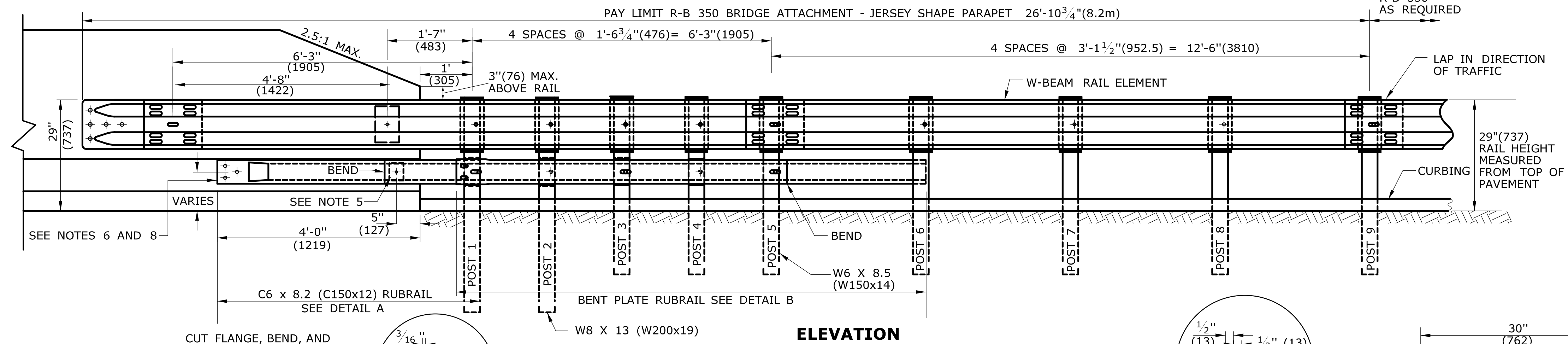


GENERAL NOTES:

- THIS R-B 350 GUIDERAIL TRANSITION IS APPROPRIATE FOR CONNECTION AT THE FOLLOWING LOCATIONS:
 - JERSEY SHAPE OR F-SHAPE PARAPET OR BARRIER WITH NO ELECTRICAL JUNCTION BOX WITHIN THE LIMITS OF THE ATTACHMENT (APPROXIMATELY 8'(2.44m)).
 - BRIDGE PARAPETS RETROFITTED FROM SAFETY WALK TO MODIFIED SAFETY SHAPE WITH NO ELECTRICAL JUNCTION BOX WITHIN THE LIMITS OF THE ATTACHMENT (APPROXIMATELY 8'(2.44m)).
 - LEADING AND TRAILING ENDS ON DUAL DIRECTION ROADWAYS.
- POSTS 1 THROUGH 5 REQUIRE AN ADDITIONAL HOLE TO ATTACH LOWER BLOCKOUTS AND/OR RUBRAIL.
- RUBRAIL BLOCKOUTS LOCATED ON POSTS 1 THROUGH 4 ARE OFFSET DRILLED AND SECURED WITH 5/8"(16) BUTTONHEAD BOLTS (SEE CHART FOR BOLT LENGTHS). SECURE BLOCKS TO POSTS 2 AND 4. SECURE RUBRAIL AND BLOCKOUTS TO POSTS 1 AND 3. RUBRAIL IS SECURED TO POST 5 WITH A 5/8" x 4 1/2" (16x114) BUTTONHEAD BOLT. RUBRAIL IS FLARED TO BACK OF POST 6 AND NOT SECURED.
- STEEL SPACER TUBE IS A SCHEDULE 40 GALVANIZED PIPE 6"(152) INSIDE DIAMETER x 9"(229) LONG. ATTACH TUBE TO RAIL ONLY WITH 5/8" x 1 1/4" (16x32) LONG BUTTONHEAD BOLT AND RECTANGULAR PLATE WASHER. TUBE IS NOT ATTACHED TO PARAPET.
- SEE DETAIL F FOR SLOPED RUBRAIL BLOCKOUT. BLOCKOUT IS ATTACHED TO RAIL ELEMENT ONLY. USE 3/8" x 3"(10x76) LAG BOLT WITH FLAT WASHER.
- SHOP FABRICATE THE C6 x 8.2 (C150x12) RUBRAIL END TO BE CONSISTENT WITH THE SLOPE OF THE JERSEY SHAPE OR F-SHAPE AND ATTACH FLUSH WITH THE SLOPED TOE OF THE PARAPET OR BARRIER.
- USE CLASS B TYPE II W-BEAM RAIL ELEMENTS (10 GAUGE) FOR INSTALLATIONS ON EXPRESSWAYS AND RAMPS.
- ANCHORAGE:
 - AT EXISTING PARAPETS OR BARRIERS, RUBRAIL SHALL BE ANCHORED USING THREE 5/8" x 6"(16x152) CHEMICALLY ANCHORED BOLTS WITH WASHERS. MAXIMUM PROJECTION FOR BOLTS SHALL BE 1/2"(13).
 - AT EXISTING PARAPETS OR BARRIERS, THE W-BEAM TERMINAL CONNECTOR SHALL BE ANCHORED USING FIVE 7/8" x 12"(22x305) CHEMICALLY ANCHORED BOLTS WITH WASHERS. MAXIMUM PROJECTION FOR BOLTS SHALL BE 1/2"(13). THE 12"(305) MINIMUM LENGTH OF BOLTS SHALL INCLUDE A MINIMUM EMBEDMENT DEPTH OF 10"(254) INTO SUITABLY REINFORCED CONCRETE.
 - NEW PARAPETS OR BARRIERS, THE W-BEAM TERMINAL CONNECTOR AND RUBRAIL SHALL BE ANCHORED AS DETAILED ON THE STRUCTURE PLANS.
- FOR NEW CONSTRUCTION WHERE CURBING IS NEEDED, USE EITHER 4"(102) BITUMINOUS CONCRETE PARK CURBING OR PRECAST CONCRETE TRANSITION CURBING SET WITH A 4"(102) REVEAL. IF EXISTING CURBING IS GRANITE STONE TRANSITION CURBING, RESET CURB TO A 4"(102) REVEAL OR REMOVE IT AND REPLACE IT WITH 4"(102) CURBING.
- POSTS 1 AND 2 ARE W8 x 13 (W200x19), 7'-6"(2286) LONG. ALL OTHER POSTS IN TRANSITION ARE W6 x 8.5 (W150x14), 6'(1829) LONG.
- ADDITIONAL BLOCKOUTS WITH POSTS 1 THROUGH 6 SHOULD BE AVOIDED.
- FOR SINGLE DIRECTION ROADWAY:
 - INSTALL W-BEAM TERMINAL CONNECTOR BETWEEN NESTED GUIDERAIL ELEMENTS.
 - FOR DUAL DIRECTION ROADWAY FOR APPROACHING TRAFFIC:
 - INSTALL W-BEAM TERMINAL CONNECTOR BETWEEN NESTED GUIDERAIL ELEMENTS.
 - FOR TRAILING END:
 - INSTALL W-BEAM TERMINAL CONNECTOR OUTSIDE OF THE NESTED GUIDERAIL ELEMENTS.
 - MINIMUM RAIL HEIGHT FOR NEW CONSTRUCTION SHALL BE 29" (737) ± 1" (25).



ALL METRIC DIMENSIONS ARE IN MILLIMETERS (mm) UNLESS OTHERWISE NOTED.