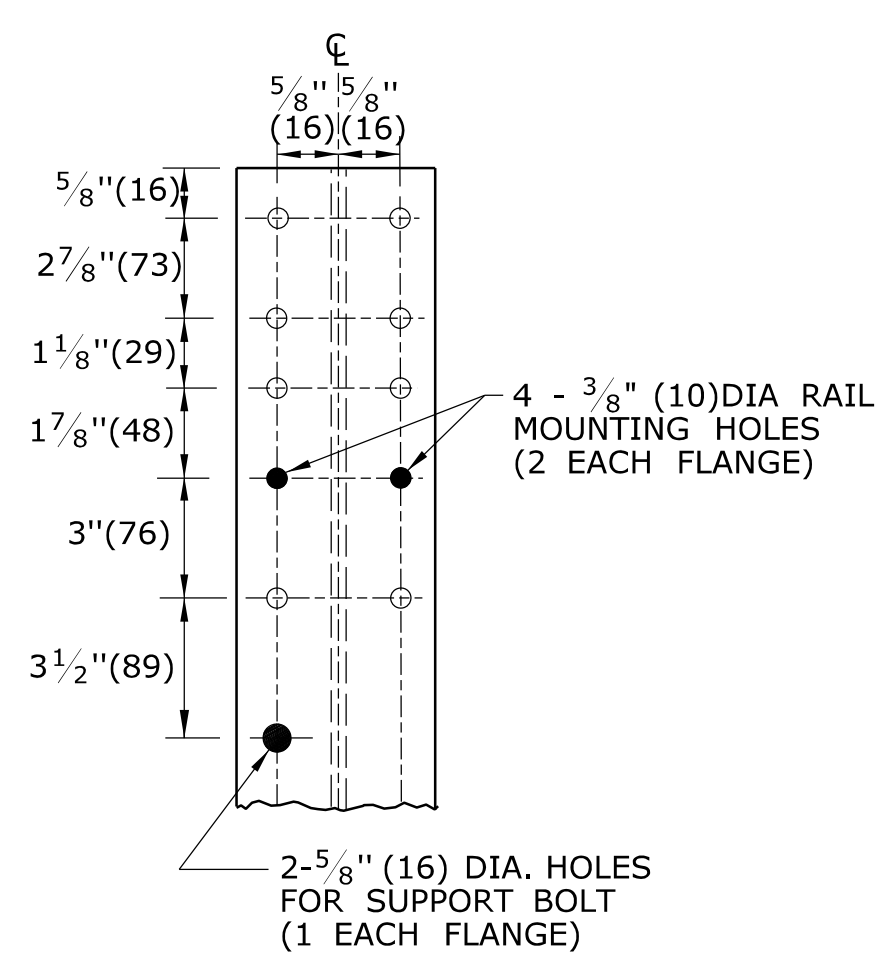
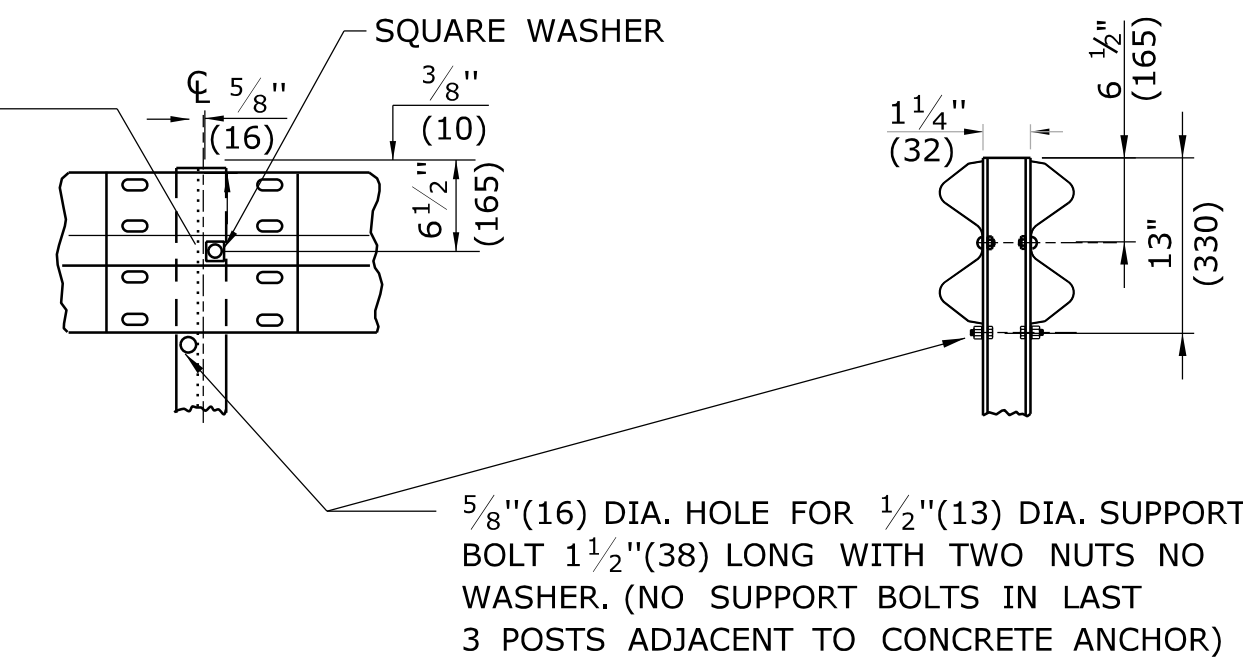


**BOLT HOLE SPACING DETAIL
FRONT ELEVATION
S3 x 5.7 POST**
(SEE NOTE 1)



5/16" (8) DIA. 1 1/2" (38) HEX HEAD STEEL FULL BODY BOLT & NUT WITH 5/8" (16) UNTHREADED 4000LB. (17.8kN) MIN. & 5400LB. (24.0kN) MAX. TENSION STRENGTH



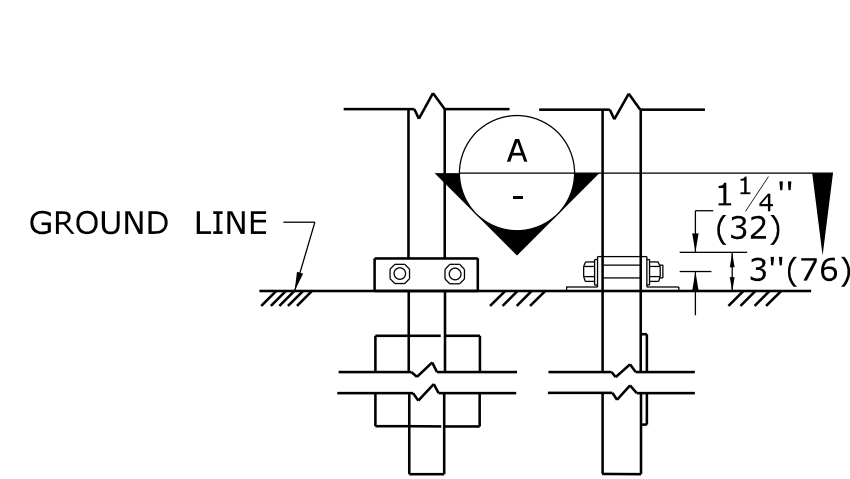
TYPICAL RAIL MOUNTING & SUPPORT BOLT FOR MD-I RAIL

GENERAL NOTES:

1. EIGHT (8) ADDITIONAL 3/8" (10) DIA. HOLES (AS REQUIRED FOR 3 CABLE GUIDERAIL) ARE ACCEPTABLE IN POSTS.
2. J-HOOK BOLTS MAY BE SUBSTITUTED FOR BOTTOM PLATE ANCHORAGE IN CONCRETE END ANCHORS OF THE SAME SIZE STRENGTH AND LENGTH AS NOTED ON THE PLANS.
3. SEE SHEET HW-910.01 FOR HARDWARE AND DELINEATOR DETAILS.

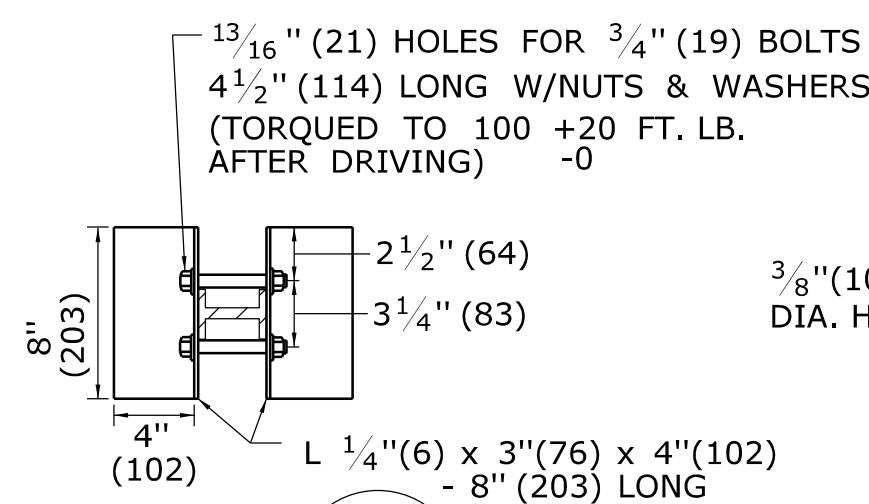
TABLE "A"	
CURVATURE (DEGREE OR RADIUS)	POST SPACING
LESS THAN 26° (220'(67m) RAD OR MORE)	12' - 6" (3810)
219'(67m) TO 111'(34m)	6' - 3" (1905)
110'(34m) TO 76'(23m)	4' - 2" (1270)
75'(23m) TO 50'(15m)	3' - 1 1/2" (952.5)
LESS THAN 50'(15m)	USE NOT RECOMMENDED

FOR CURVES WITH RADII OF 150'(45m) OR LESS ALL RAIL ELEMENTS SHALL BE SHOP FABRICATED TO THE PROPER RADIUS.

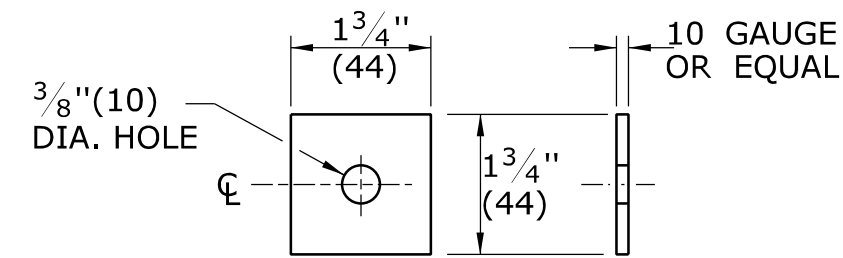


BEARING CLAMP

NOTE: BEARING CLAMP SHALL BE INSTALLED ONLY ON POST NEAREST END ANCHOR

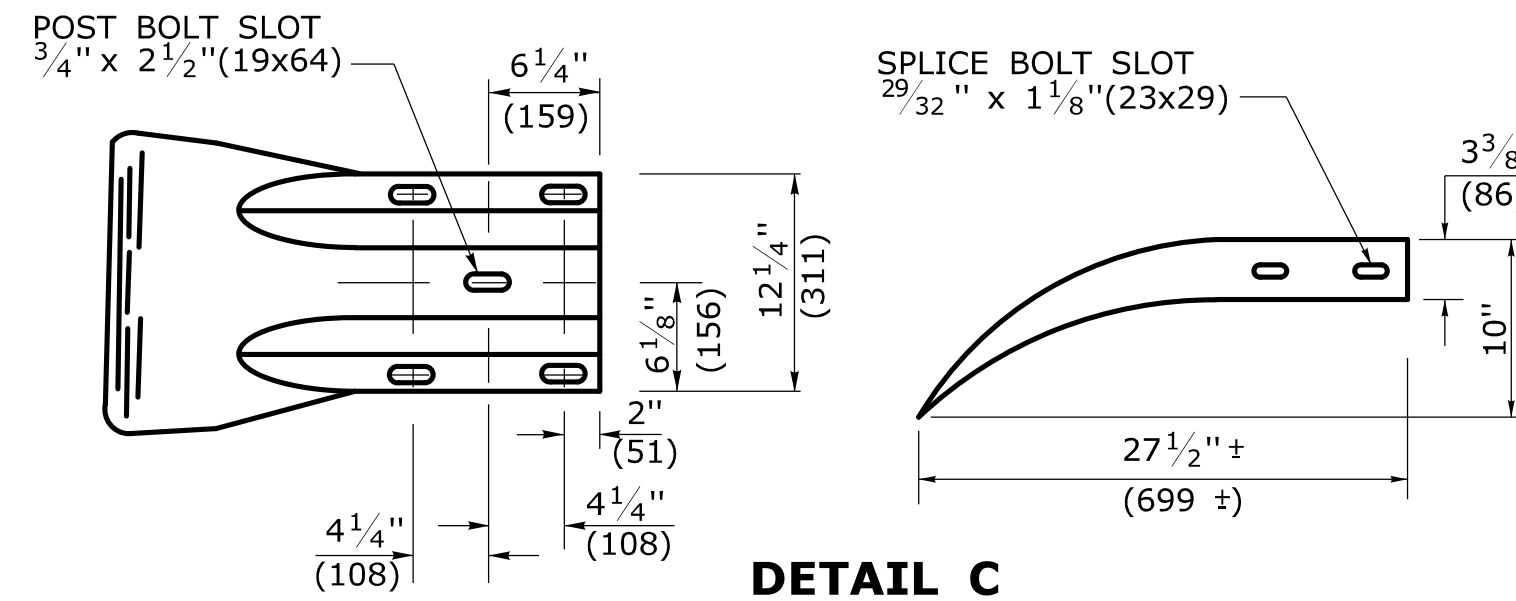


SECTION A

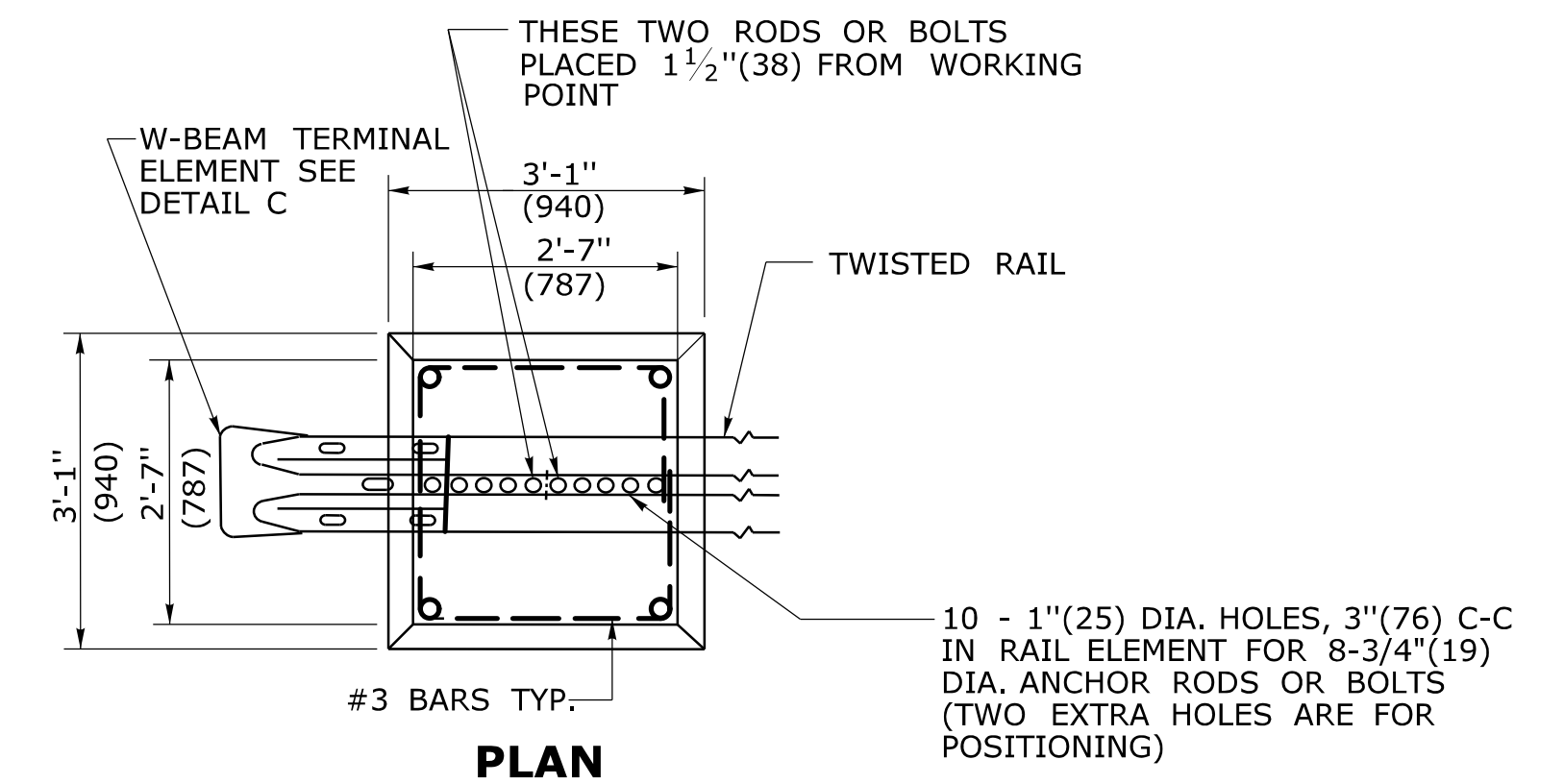


SQUARE WASHER

PLACE WASHER IN VALLEY OF RAIL ELEMENT FOR MOUNTING TO POST

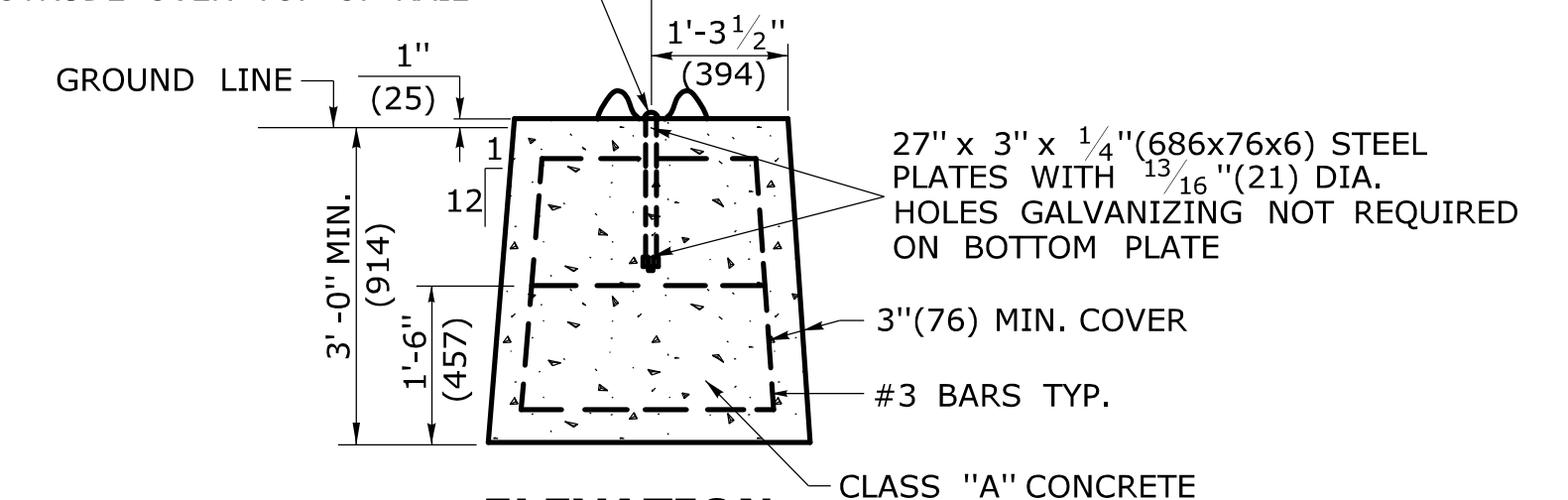


**DETAIL C
W-BEAM TERMINAL ELEMENT**

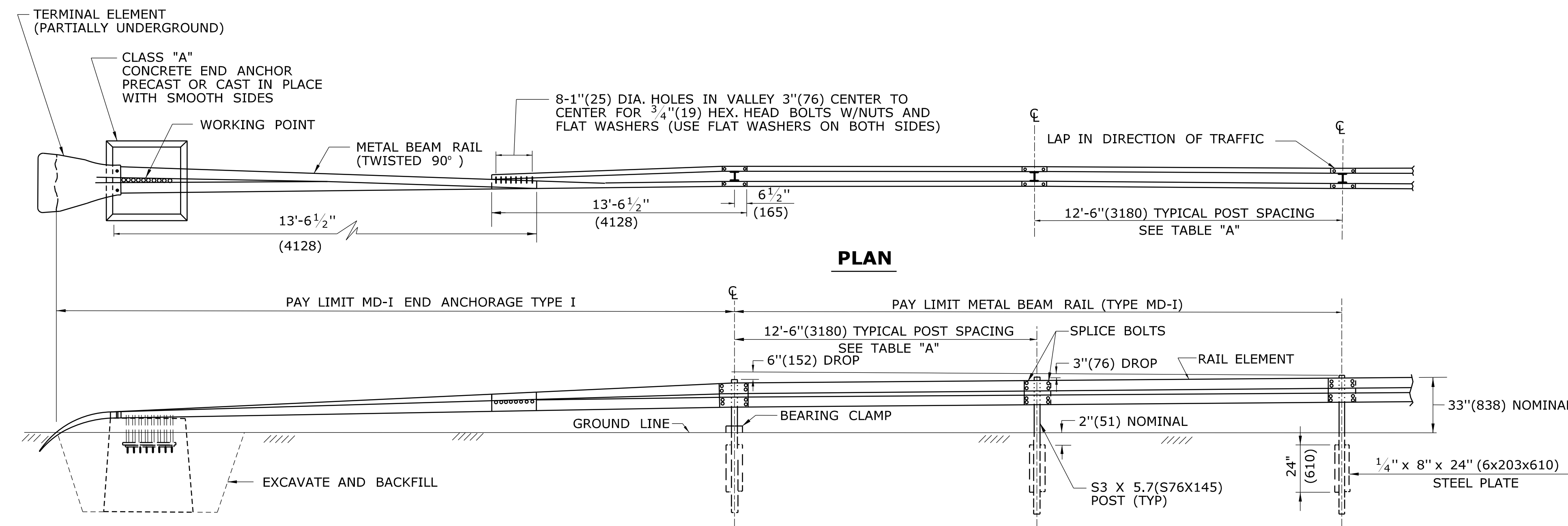


PLAN

8 - 3/4" (19) DIA. RODS OR BOLTS - 18" (457) LONG WITH NUTS AND WASHERS. ROD OR BOLT NOT TO PROTRUDE OVER TOP OF RAIL



**ELEVATION DETAIL B
CONCRETE END ANCHOR FOR MEDIAN**



MD-I END ANCHORAGE TYPE I

ELEVATION

ALL METRIC DIMENSIONS ARE IN MILLIMETERS (mm) UNLESS OTHERWISE NOTED.